

APPENDIX A

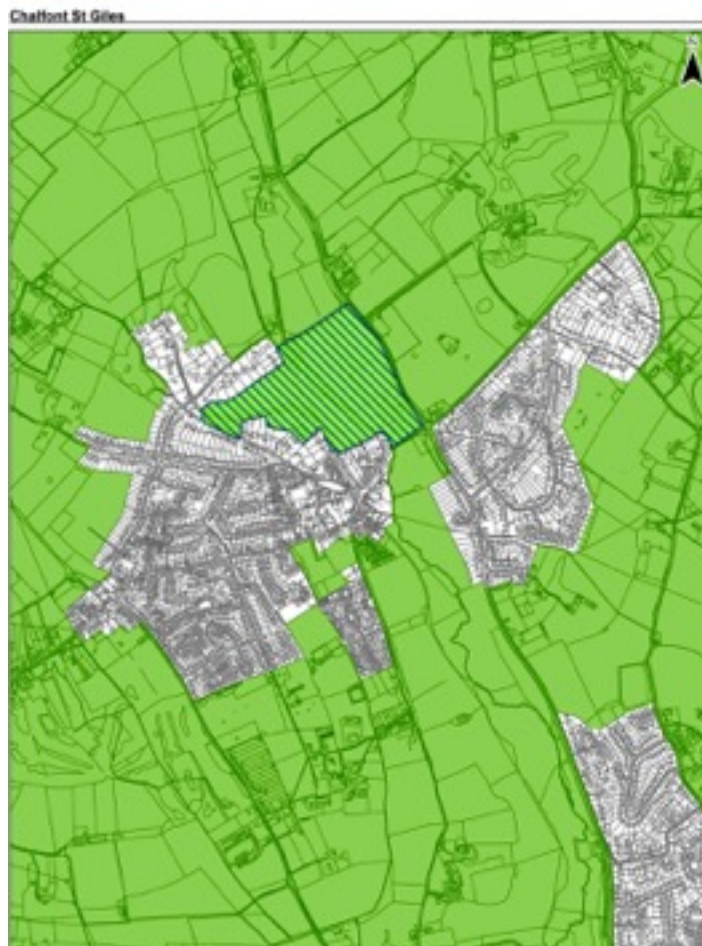
Planning Policy Team
Chiltern District Council Offices
King George V Road
King George V House
Amersham
Bucks
HP6 5AW

12 th March 2016

Dear Chiltern and Buckinghamshire County Council.

In response to the Chiltern and South Bucks Local Plan Initial Consultation (Regulation 18) incorporating issues and Options ('The Local Plan') please see my response to questions 11-12-13-17. I would like to protect areas of Green Space within the boundaries of my village detailed in the maps below.

Firstly, I request that the Hatched area of land owned by Chiltern District Council, presented on p40 of 'The Plan' and below (fig 1.1 commonly known as Upper Stone Meadow) be protected from all future development and any 'change of use'.



Secondly I would like to extend the Hatched area in Fig 1.1 and incorporate the area more commonly known as Lower Stone Meadow.

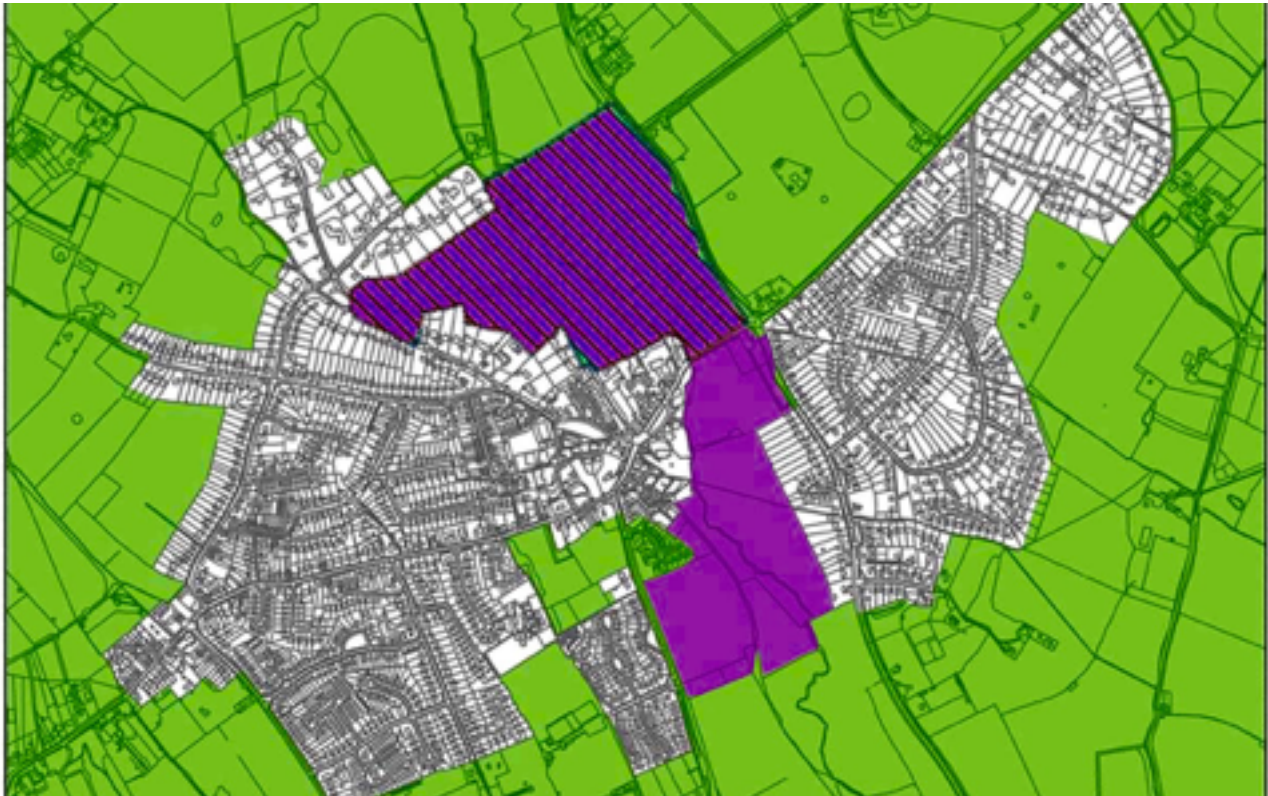


Fig 1.2

Both Upper and Lower Stone Meadow above in Purple (Fig 1.2) are currently owned by Chiltern District Council see Ordnance Survey Map reference SU9993NW. Land Registry Title Number BM294098.

I request the land in fig 1.2 have a binding and legal covenant imposed on it that binds Chiltern District Council to protect it for the good of the village and to never allow development of any kind, on any scale, including but not exclusively housing, commercial buildings or offices.

My supporting evidence is that fig 1.2 highlights land already recognised as An Area of National Interest. It contains a rare and precious chalk stream, wildlife, flora and fauna, and fulfils its existing classification as An Area Of Outstanding Natural Beauty in Green Belt. It is physically unsuitable for any development as it is on a flood plain, above the proposed HS2 Tunnel, in an area safeguarded by HS2 and therefore not deliverable before 2036.

SIGN:

PRINT: